

# WRENINGHAM

# MARDLE



A bi-monthly Newsletter Produced by  
The Village Hall Management Committee  
Charity No: 284991

No: 128

DECEMBER 2002/JANUARY 2003



From The Chairman,

During the past year the committee has worked hard to improve the general appearance of the interior of the village hall and I was disappointed by the lack of support they received, from hall users, at the Annual General Meeting - only 2 people attended other than committee members. Unfortunately, due to circumstances outside his control, the treasurer was not able to complete the accounts in time for audit and these were presented, and adopted subject to audit. Subsequently information has come to hand which required them to be adjusted. The audited accounts will be presented at an Extra-ordinary Meeting to be called as soon as they are ready.

All the retiring officers were re-elected at the meeting following the A.G.M.

Chairman	-	Christine Minns
Vice-Chairman	-	Ian Withey
Secretary	-	Valerie Harvey
Treasurer	-	Geoffrey Townshend



Village Hall Booking Secretary:

Mr. Alex Deans, Lowther Cottage,  
Wymondham Road, Wreningham,  
Norwich, NR16 1AT - Tel: 01508 489757



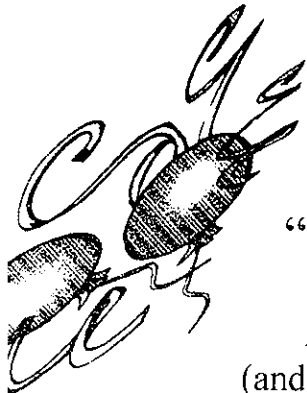
SOCIAL CLUB



The Social Club prize draw will take place on Thurs. 19th December and squares will be available on Club evenings leading up to that time. To find out what else is happening at the club call in on a Thursday or Friday evening or watch out for posters. For people who do not know the village hall, entry is from the car park side of the building towards the back and is signposted, Margaret Preston room (and Social Club). Don't forget that membership is due for renewal on 1st January. Adults £1.00/Juniors 50p. New members always welcome.

FRIENDS OF WRENINGHAM SCHOOL

Friday 17th January - Bingo Evening for adults and children. Everybody welcome. Watch out for posters giving more details.



**NEW YEARS EVE PARTY**  
 ENTERTAINMENT BY  
**“Jane and the Music Man”**

9 p.m. till late

All Tickets - £4.00 each in advance  
 (and bring a plate of food to pool and share)

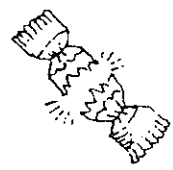
For tickets contact:

Penny on 01508 489319

Roddy on 01508 489491

Christine on 01508 488123

All proceeds to MacMillan Cancer Relief



**Childrens Christmas Disco**



**Friday 13th December - 16:30 to 18:30**  
**Wreningham Village Hall - Year 2 & under**

Tickets £2

Please bring a plate of food





## WRENINGHAM "ALL SAINTS" CHURCH



The recent Christmas Fayre was a great success both socially and financially. It was lovely to see so many children there and Father Christmas enjoyed meeting them all. The event made £425.12p for church funds.

With Christmas nearly here a service of lessons and carols will be held in the church on Tuesday 17th December at 7 p.m. - Do come along and join in our celebrations. Please could those who decorate the church do so on Saturday 14th December. With year 2002 drawing to a close, a very big thank you to all the ladies who have provided flowers in the church throughout the year, and to everybody good wishes for a very happy Christmas and a peaceful New Year to you from "All Saints".

Wardens - Dennis Long and Margaret Wilkinson

### British Legion Poppy Appeal 2002

Mrs M. Wilkinson	Wymondham Road	38.36
Miss E. Maidment	Ashwellthorpe Road	21.54
Mr. B. Howes	Hethel Road	27.95
Mr. H. King	Church Road	10.26
Mrs T. Hanton	Top Row/ Mill Lane	74.83
Social Club		3.50
Other donations		14.83

Total £191.27

Many thanks to the collectors for their help in this years' appeal and the continued generosity of the parishioners.

Barney Howes, Local Organiser.



## PARISH COUNCIL NEWS



### Homewatch

Council has been advised by the Homewatch, that there has been 5 burglaries in the village recently. You are advised to check that sheds and garages are locked at all times.

### Notice Boards

New notice boards have been put up in the village but as these are normally locked anybody wishing to put up a notice needs to contact Julie on tel:489558, Ros on Tel: 489672 or Christine on Tel: 488123.

### Golden Jubilee Booklet

A reminder to those who have not contacted us with details of those living in your house on 3rd June, please let us have your reply as soon as possible. As well as the contact points listed in the original letter they can also be delivered by hand to Spratts office.

The next parish council meeting will be on Tuesday 21st January 2003 at 7.30 p.m. in the Margaret Preston room at the village hall.

### SHORT MAT BOWLS

On Thursday evenings at 7.30 p.m. - through out the winter season. New members of any standard welcome, just turn up at the village hall and give it a try, even if you have never bowled before!



**[www.demandbroadband.com](http://www.demandbroadband.com)**

## **£3m to connect communities across the region to broadband**

You may well have heard the term broadband. It simply means very fast access to the internet. Most of us spend up to a third of the time we're online waiting for things to download, for emails to arrive, for search engines to finish searching. Broadband means you can download the latest Harry Potter trailer in seconds, listen to radio from across the globe, get email instantly, work from home more effectively and really enjoy learning online. The list goes on.

But there's a problem. Our region is a very rural one and broadband is arriving slower than elsewhere in the country. The East of England Development Agency (EEDA) is working to make sure everyone in the region who wants broadband, can access it. There are two things we'd like you to know about.

1. [www.demandbroadband.com](http://www.demandbroadband.com). If you want broadband please go to this site and register. Tell your friends too. We'll be telling the companies who supply broadband where the demand is and encouraging them to connect you as soon as possible
2. We've also launched the Connecting Communities competition. EEDA has £3m to provide communities like yours, with broadband. All you have to do is get at least six of you together, fill out the entry form (available from the website or by calling 0845 601 8824) and enter.

If you can't get broadband and want it, click on the [www.demandbroadband.com](http://www.demandbroadband.com) website now and join the campaign.

# Happy New Year

## Flower Club

There will be no meeting in December.  
The Annual General Meeting will be on Thurs. 23rd  
January in the village hall. Start at 2 p.m. prompt and  
after the business the entertainment will be a slide show.  
Do come and enjoy the afternoon. Visitors £2.50

---

Fornsett St. Peter Methodist Chapel - Coffee Morning in  
aid of the National Children's Homes will be held on:  
Tue. 10th December and 14th January  
10 a.m. - 12 noon - Everybody welcome.

---

## Mobile Police Office

The central area unit parks at Wreningham village hall  
between 2 p.m. and 3.30 p.m. on a Tuesday afternoon  
every 4 weeks and the staff on duty would be pleased to  
see anybody wishing to talk to them on any relevant  
subject.

Visits on 17th December  
14th January

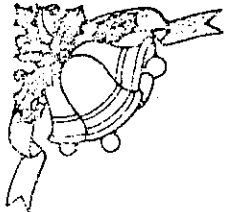


## Blood Donors

Dates for giving blood at Wymondham Central Hall:

Fri. 27th Dec.	13.00 - 15.30; 16.30 - 19.00
Tue. 14th Jan.	13.00 - 15.30; 16.30 - 19.00
Tue. 28th Jan.	13.00 - 15.30; 16.30 - 19.00

---



Calling all pantomime lovers!

“Sing a Song of Sixpence”

(by Norman Robbins)



is the pantomime to be performed mainly by  
people from Ashwellthorpe and Wreningham

at

Wreningham Village Hall

on

Thurs. 20th, Fri. 21st and Sat. 22nd February

Tickets go on sale from Friday 3rd January  
priced at £4.00

(children/senior citizens - Thurs/Fri. £2.00)

available from:

Christine Minns, High Gables, Church Road,  
Wreningham. Tel: 01508 488123

or

Shirley Moss, 2 Greenwood Close,  
Ashwellthorpe. Tel: 01508 489460

---

Message from the Editor: My thanks to those who have  
delivered the Mardle throughout the year, from feed back  
I receive I know they are read by many.

---

On behalf of the Village Hall Management Committee,  
our best wished to you all for a happy Christmas and a  
peaceful and healthy New Year.

