

WRENINGHAM MARDLE

2014

A BI-MONTHLY NEWSLETTER FOR THE LOCAL COMMUNITY

(Produced by the Wreningham Village Hall Management Committee)

Charity No: 284991

No: 196

APRIL/MAY



HAPPY EASTER





NEED A NUMBER?

VILLAGE HALL	CHAIRMAN - JOHN BLIGH	489301
VILLAGE HALL BOOKINGS	JILL HUSTLER	481823
SOCIAL CLUB	TREASURER - GARY MUTTEN	07944/290553
PARISH COUNCIL	MICHAEL HILL	488379
CLERK	HEIDI FRARY	01603 759215
CHURCH WARDEN	CHRISTINE MINNS	488123
WRENINGHAM VC PRIMARY	ROBERT JONES	489355
MARDLE ARTICLES	ANNIE GREENING	489690
TREE WARDEN/ COMMUNITY ORCHARD	IAN DOBSON	489725
COFFEE MORNING	JEAN LAMBOURNE	481947
FLOWER CLUB	TRICIA MOORE	570189
MOTHER & TODDLER	CLAIRE CORMACK	481748
BRAMBLE BEARS	DEBBIE ALVES	07847/225055
BIRD IN HAND		489438
SHORT MAT BOWLS	SUE SAYERS	489654
FLEXI BUS	BOOKINGS	0845 600
WYMONDHAM POLICE	SWITCHBOARD	101

MESSAGE FROM CHAIRMAN

"Is Spring/Summer really on its way, at last? Let's hope so. The Hall maintains its programme of activities and it is definitely worth mentioning and paying tribute to the Ashwren Players for the first class pantomime they staged in February. In particular, to have performed three times on the Saturday to include a charity performance for the East Coast Truckers (who have already pre-booked for next year!) was testimony to their thespian artistry, determination and stamina. Well done to everyone involved, including the backstage crew, who made it possible!

The Social Club are busier than ever. They have introduced a Ladies Night on the last Friday of each month, which is proving very popular and have a number of events, such as the curry night, beer festival and the on-going families night on the first Friday of the month.

A new social event with a Fish & Chip van coming to the VH car park starts on Friday, 11th April. Keep up to date with what is happening by having a look at the calendar on the rear page of this Mardle and make sure you do not miss the chance to join in!"

John Bligh (Chairman)

PARISH COUNCIL

(Clerk-Heidifrary-01603759215 hefrary@googlemail.com)

Next Parish council meeting Tuesday 13th May will start at 7 pm for half an hour. The bar will then be open at 7.30 pm and the Annual Parish meeting to which **everybody** is invited will start at 8 pm. This is the meeting at which all the Village Organisations report on their activities over the past year.



WRENINGHAM ALL SAINTS CHURCH

Sunday 30th March – Mothering Sunday service at 10.30 am and everybody is welcome. On Palm Sunday (13th April) we have a 9.15 am Holy Communion service. On the following Wednesday (16th) we look forward to welcoming the Essex Leg of the pilgrimage to Walsingham when they stop at the church at about 4.30 pm for a short rest and refreshments – do come in and meet them.

Wreningham and Ashwellthorpe churches are joining forces to hold a Quiz and Supper evening on Friday 25th April as a fundraising event. See details elsewhere.

Christine Minns, Churchwarden

CONNECTING WITH WILDLIFE AT THE CHESHIRE HOME

THE GROVE, EAST CARLTON, NR14 BHP

SUNDAY 18th MAY 2014, 1p.m – 5p.m

PLANT STALL, CHILDREN'S ACTIVITIES, TOMBOLA,
WILDLIFE WALKS,
BOOK STALL, BRIC a BRAC, WILDLIFE INFORMATION;
NAME THE TEDDY, NORFOLK WILDLIFE TRUST GOODS
FOR SALE, REFRESHMENTS

ADULTS £2 CHILDREN UNDER 12 FREE

ALL PROCEEDS TOWARDS THE RESIDENTS AT THE GROVE & LOCAL NATURE WORK

“Quiz & Supper”

Friday 25th April

7.15 pm for 7.30 pm

WRENINGHAM VILLAGE HALL

£5.00 TO INCLUDE A LIGHT SUPPER

Come as a team of up to 6 people or individually and
join a team

If possible, book in advance to help with numbers for
supper.

Call Christine on 01508 488123

WYMONDHAM YOUTH BUS NEEDS YOU!

Do you have an HGV / PCV Licence? We need someone to drive the bus
from the storage to the Browick Road Lorry Park and then return the bus
at the end of the evening, AND/OR can you spare a couple of hours on a
rota basis Friday evenings to make hot drinks and chat with young
people?

Please ring me if you are able to help. Irene Moore: 01508 489635

(The last date for copy for the June/July Mardle is Wednesday 12th June)



WHAT'S ON?

DANCE TO LIVE BANDS

PUT YOUR DANCING SHOES ON AND COME AND JOIN
US AT THE VILLAGE HALL.

Dance to live **50's, 60's, 70's** classics. Have a jive, or simply
come and listen to the bands!

Saturday 12th April – Mervyn & the Starbeats

Saturday 24th May – Second Opinion

8.15pm Onwards

Admission £6.50

(IN AID OF HALL FUNDS)



STARFIGHTER ROCK 'N' ROLL

Saturday 26th April – Tinstars

Saturday 31st May – Hayriders

DUMPLIN' COUNTRY

**Easter Monday (21st April) – Charity dance with
"Barhoppers x 2"**

Bank Holiday Monday (5th May) Texas Gun Duo

Doors open 1.00 pm – Music from 2.00 pm

£5

HOT DRINKS / BAR / GOOD RAFFLE!

FLOWER CLUB

Thursday 24th April & Thursday 29th May

Doors open 1.30 p.m.

Visitors welcome – For details contact

Tricia Moore: 570189

Last Wednesday Coffee Morning.



23rd April and 28th May

10 a.m. – 12 noon, in the main hall.

ALL WELCOME.

SHORT MAT BOWLS

Will resume in the Autumn.

For further details call Sue on 01508 489654

ZUMBA

Every Monday evening from 6.30p.m. – 7.30p.m. In the
Village Hall

£5 (Pay As You Go)

SPRATTS COACHES

For prices and to book please call: 489626

Wednesday 21 May 2014 08:00am - 05:00pm

Out to Lunch Mystery Tour

Wednesday 30 July 2014 08:00am - 05:00pm

Sandringham Flower Show

MATTERS ARISING FROM PARISH COUNCIL MEETING

RIPARIAN RESPONSIBILITIES

This Winter has seen many parts of the country flooded following the wettest winter for many decades. This has brought devastation to many. In Somerset, for example, residents point to the lack of waterway maintenance as being a major contribution to the floods they have experienced in their homes, businesses and land.

Wreningham had its own flooded areas but thankfully nothing like the Somerset Levels. This serves as a reminder to those with water flowing (via a river, stream, drain, ditch, culvert, etc.) on their land that they have a responsibility to maintain the flow of water along that watercourse.

Please see NCC's Riparian note on the Parish Council's page on the Wreningham site.

EMERGENCY PLAN QUESTIONNAIRE

Emergencies happen (see the Floods) and not always in expected ways. Working with South Norfolk Council, we wish to understand our emergency preparedness, our capability and ability to respond and protect parishioners. See the enclosed questionnaire and consider how and when you might help, or indeed, need help in an emergency. All information will be held in the strictest confidence and managed appropriately. If you do not have the questionnaire or pre-paid reply envelope with this Mardle please contact me, Michael Hill, on 488379.

PROTECTING A VERGE

The Parish Council has received observations from residents about the placing of obstructions in / on the verge(s) running alongside properties and beside the highway. These are reported as being unsightly and dangerous.

The obstructions (boulders, poles, wooden posts, reflective posts, etc.) are put there to protect the verge from encroachment by passing vehicles. NCC Highways advise that verges are regarded as part of the highway and to place obstructions on the highway is illegal. Hence it is possible that an incident involving such obstructions and a highway user could lead to action (for recovery of loss or damage or reparation for injury) by the user or their representatives.

The Council thought it necessary to advise residents that this risk exists and they should consider carefully the implications arising from placing obstructions on their verges.

WrenSocial Club

NEW... FISH & CHIPS FRIDAY!

WrenSocial is thrilled to announce that we have been able to secure the services of a professional Fish & Chips vendor on the **SECOND FRIDAY** of every month. The Fish & Chip van will be in the Village Hall car park between **6 & 7PM** starting from **FRIDAY APRIL 11th**. We hope that this new service will be great for the village, but we can only continue with it, if it is well supported. Please give it a try!

You can buy your Fish & Chips and take them home OR bring them into the Social Club, where we will supply condiments and ensure that the bar is open for you. Non-members are very welcome too.

CHECK OUT the back page of this newsletter for more details of what's happening at your Social Club, including our **Easter EggStravaganza, Quiz Night** and our new **Ladies Night!**

The Annual General Meeting is planned for Thursday 10th April.

THE FRIENDS OF WRENINGHAM SCHOOL

18 MAY 2014 ASHWELLTHORPE GARAGE SALE

10AM – 12PM

Looking for a bargain? Fancy a wander around the village? Or just come along for tea & cake.....

There will be numerous residents in Ashwellthorpe having a garage/table top sale in their front garden as well as others with stalls at the Village Hall. Come along and stock up/grab a bargain.

Maps and refreshments available at the Village Hall throughout the morning

EASTER FAYRE

5th April 2014

1:00pm – 4:00pm

Wreningham Village Hall

Stalls, games, cakes, decorate an egg competition and much more!

SARAH'S CAKES

Celebration cakes with a homemade touch

07967 931754

www.sarahscakesoffundenhall.co.uk

REEDER TIMBER

Supplier: - Firewood, Tree Surgery, Fencing

01508 488452

DOMESTIC AL

Electrical Appliance Repair

(From washing machines to Dyson vacuums)

01508 481919

D.M.G Building Services

Renovations to new build.

Contact Darryl on: 01508 489690

LOST CONTROL OF YOUR PLOT?

Garden in need of some TLC after the winter?

Contact Trevor, your local Green Gardner

On 01508 489253 or Email tdw2106@gmail.com

WHY NOT ADVERTISE YOUR LOCAL BUSINESS OR SERVICES HERE ?

(Just a £5 Donation for the year!)

Contact Jill Hustler on 481823

Wren Social

Something for all the FAMILY!

1ST FRIDAY



2ND FRIDAY

**Fish & Chips
Friday**



Eat Here or Take Home
CHIP VAN IN CAR PARK 6-7PM

3RD FRIDAY

EVENT NIGHT!

APRIL 18th

Easter EggStravaganza!

3pm: Bar Open,

3.30pm: Kiddies Egg Hunt

5pm: Family BBQ

MAY 16th Quiz Night (7pm)

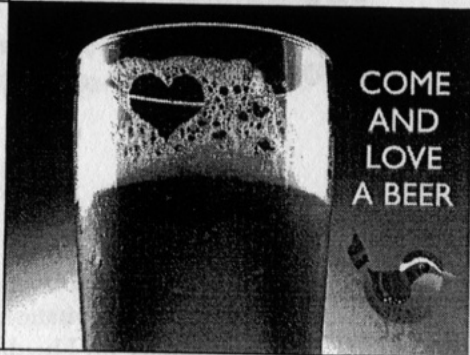
LAST FRIDAY

**LADIES
NIGHT**

The fun begins at 8pm

EVERY THURSDAY
BeerNight

WITH A DIFFERENT
GUEST ALE TO SAMPLE
EVERY WEEK FROM 8PM



FOLLOW THE WREN FOR UPDATES:

WEB: WrenSocial.com TWITTER: @WrenSocial