

# WRENINGHAM MARDLE

2014

A BI-MONTHLY NEWSLETTER FOR THE LOCAL COMMUNITY

(Produced by the Wreningham Village Hall Management Committee)

Charity No: 284991

No: 199

OCTOBER/NOVEMBER



## WRENINGHAM ART EXHIBITION 2014



### OPENING TIMES:



Saturday/Sunday  
11<sup>th</sup> and 12<sup>th</sup>  
October  
10 - 4 p.m.

**Admission: £1.50**



SEE INSIDE FOR FURTHER DETAILS



## NEED A NUMBER?

|                       |                         |                 |
|-----------------------|-------------------------|-----------------|
| VILLAGE HALL          | CHAIRMAN - JOHN BLIGH   | 489301          |
| VILLAGE HALL BOOKINGS | JILL HUSTLER            | 481823          |
| SOCIAL CLUB           | CHAIRMAN - IAN HOLLOWAY | 481700          |
| PARISH COUNCIL        | MICHAEL HILL            | 488379          |
| CLERK                 | HEIDI FRARY             | 01603 759215    |
| CHURCH WARDEN         | CHRISTINE MINNS         | 488123          |
| WRENINGHAM VC PRIMARY | ROBERT JONES            | 489355          |
| MARDLE ARTICLES       | ANNIE GREENING          | 489690          |
| TREE WARDEN           | IAN DOBSON              | 489725          |
| COFFEE MORNING        | JEAN LAMBOURNE          | 481947          |
| FREE SALE             | VAL KEEL                | 488231          |
| FLOWER CLUB           | TRICIA MOORE            | 570189          |
| MOTHER & TODDLER      | SHARON SMITH            | 01953<br>602201 |
| BRAMBLE BEARS         | DEBBIE ALVES            | 07847/225093    |
| SHORT MAT BOWLS       | SUE SAYERS              | 489654          |
| FLEXI BUS             | BOOKINGS                | 0845 600        |
| WYMONDHAM POLICE      | SWITCHBOARD             | 101             |

## MESSAGE FROM CHAIRMAN

Summer sun is still with us as the season of mellow mists takes hold and the nights draw in, so time for the annual Art Exhibition to lift the autumnal spirits over the weekend of 10th to 12th October. With an outstanding centre-piece and live demonstrations by different artists on both Saturday and Sunday, it promises to be an event not to be missed.

The regular Social Club exciting programme of events continue apace with the second Friday "fish & chips" night proving really popular and a great way to meet and socialise with fellow villagers. On a point of general information, South Norfolk Council are due to start domestic glass bin collections on 1st October, but the Village Hall will continue to offer plain and coloured glass bins in the car park. It is important to help us to maintain this service to our village as it provides a revenue for the hall and a facility for the Social Club bar, so please ensure that if you have any surplus bottles, which you do not have enough capacity for in your own bin that they go into those bins."

John Bligh (Chairman)

The deadline for copy for the next edition of the Mardle is Wednesday 12<sup>th</sup> November.

## PARISH COUNCIL

(Clerk—Heidi Frary-01603759215 [clerk.wpc@gmail.com](mailto:clerk.wpc@gmail.com))

THE NEXT PARISH COUNCIL MEETING - TUESDAY 11<sup>th</sup> November

### BONFIRES (AND YOUR NEIGHBOURS!)

It is perfectly legal to have a bonfire and there are no restrictions as to when you can have it. However, you must comply with the Environmental Protection Act.

Following a complaint to the Parish Council and in the interest of good neighbourliness, the following might be useful:

- Timing – Choose a good time for you and your neighbours. Avoid weekends and bank holidays!
- Frequency - Try to have as few bonfires as possible
- Management - Never leave a bonfire unattended
- Materials - Avoid wet or green materials as they will produce excess smoke. Do not burn anything likely to produce excessive, pungent and toxic smoke, e.g. rubber and plastic.
- Weather – Wind can blow smoke towards the neighbours; stronger winds could impact neighbours further away.

### A MESSAGE FROM S.N.D.C

Site Notices will no longer be erected for householder application unless there is a statutory requirement to do so i.e. it is in a conservation area or is a listed building (in both these instances we also have to put and advert in the local press), or is adjacent to open land (i.e. where there is no address point)

We will continue to notify in writing all neighbours adjacent to the boundary of the site, or opposite the site if it relates to any front alterations or new access, the selection of any other neighbours will be a judgement call by the case officer (as is the case at present), and whether they are materially affected by the proposal.

#### Polite Notice

After trimming you hedge to perfection, please remember to clear away your cuttings from the road as they can block drains and lead to problems with flooding. They can also cause punctures for cyclists and spoil the look of the village!

Wreningham Village Hall



# Art Exhibition

## Preview Evening

Friday 10<sup>th</sup> October 2014

8 – 10 pm

Meet the artists, study the artwork

Admission £2.00. Licensed Bar.



## Exhibition

### opening times:

Saturday – Sunday  
11-12 October 2014,

10 am to 4 pm

(Admission £1.50)

Demonstrations by local artists

Caroline Hyde-Brown and Chris Scales

Queries? Contact Val Keel: 01508 488231



## WHAT'S ON?

### **DANCE TO LIVE BANDS**

**PUT YOUR DANCING SHOES ON AND COME AND JOIN US AT THE VILLAGE HALL.**

Dance to live **50's, 60's**, classics. Have a jive, or simply come and listen to the bands!

**Saturday 18<sup>th</sup> October - "Wypeout"**

**Saturday 15<sup>th</sup> November - "Hi - Definition"**

8.15pm Onwards

Admission £6.50

(IN AID OF HALL FUNDS)

### **STARFIGHTER ROCK 'N' ROLL**

**Saturday 25<sup>th</sup> October - "Jack Baymoore & The Bandits"**

**Saturday 29<sup>th</sup> November - "The Skip Rats"**



### **DUMPLIN' COUNTRY**

**Sunday 19<sup>th</sup> October - "Terry Edwards Band"**

**Sunday 9<sup>th</sup> November - "Longshot"**

Doors open 1 p.m.

£5

**HOT DRINKS / BAR / GOOD RAFFLE!**

### **SHORT MAT BOWLS**

Each Thursday, 7.30 p.m in the Village Hall.

Please come and join our friendly group whether you are an experienced bowler or a complete beginner!

All ages welcome.

For further details call Sue on 01508 489654

## FLOWER CLUB

**Thursday 29<sup>th</sup> October:** Mrs A. Kent 'Well Heeled'

**Thursday 26<sup>th</sup> November:** Mrs A. Bridge 'Christmas crackers'

Doors open 1.30 p.m.

Visitors welcome –

For details please contact Sue Rudd on: 489526

## **Last Wednesday Coffee Shop.**



Wednesday 29<sup>th</sup> October

Wednesday 26<sup>th</sup> November

10 a.m. – 12 noon, in the main hall.

'Come and meet your neighbours, old and new,

Have a chat over a coffee, a bacon roll and homemade cakes'

**Homemade jams, chutneys and seasonal veg on sale too!**

**ALL WELCOME.**

## ZUMBA

Every Monday evening from

6.30p.m. – 7.30p.m.

Also Wednesday mornings 9.30 – 10.30 a.m.

In the Village Hall

£5 (Pay As You Go)

## **New Yoga Class**

**Monday's, term time 9.15 to 10.15 a.m.**

**October 6<sup>th</sup>, 13<sup>th</sup>, 20<sup>th</sup>**

**November 3<sup>rd</sup>, 10<sup>th</sup>, 17<sup>th</sup>, 24<sup>th</sup>**

**Contact Gwen on: 01508 570350**

**“Quiz & Supper”**  
**Friday 14<sup>th</sup> November**  
**7.15 pm for 7.30 pm**

**WRENINGHAM VILLAGE HALL**

**£5.00 to include a light supper**

Come as a team of up to 6 people or individually and join a team.  
If possible, book in advance to help with numbers for supper.

Call Christine on 01508 488123  
In aid of Ashwellthorpe and Wreningham church expenses

**BIRD IN HAND**

**OCTOBER**

Trafalgar Day 21/10/14 Nautical Ales

Jazzebo 24/10/14

Quiz Night 29/10/14

Party Night 31/10/14 Halloween Extravaganza.

Spooky Menu. Scary Ales & Cocktails

Music from 'The Men from Uncle Barry'

**Dress up if you dare !!!**

**NOVEMBER**

Quiz Night 26/11/14

Jazzebo 28/11/14

Xmas Menu now available.

Call: 489438



## WRENINGHAM ALL SAINTS CHURCH

The regular 9.15 am Sunday service has been changed from the 2<sup>nd</sup> Sunday in each month to 1<sup>st</sup> Sunday in each month. This means that we do not have a scheduled service on Remembrance Sunday when the names on the war memorial are normally read out. However a service of Remembrance will take place at Wreningham church at 10.30 am when we will be reading the names listed on both Ashwellthorpe and Wreningham war memorials.

Once again we were pleasantly surprised by the support for our harvest appeal for gifts to go to the Norwich Foodbank. Thank you to all who contributed.

Christine Minns churchwarden



## NEW MOTHER AND TODDLER GROUP

New Mother and Toddler Group Meets every other Friday 9.30 starting term time 12<sup>th</sup> Sept, Oct 3<sup>rd</sup> and 17<sup>th</sup>, Nov 7<sup>th</sup> and 21<sup>st</sup>.

### SPRATTS COACHES

**For prices and to book please call: 489262**

Tuesday 21 October 2014 08:00am - 05:00pm

**All aboard the SS Broadway at Wicksteed Park**

Saturday 8<sup>th</sup> November 2014 08:00am - 05:00pm

**Cake International at the NEC Brmingham**

## WRENINGHAM FUEL TRUST

The Trust Deed sets out that "The income from Wreningham Fuel Trust has to be given to provide fuel for the poor persons of the parish of Wreningham". This means that the charity income is available to anybody in the parish who is in need and the application may be made by the needy person or anybody who wishes to nominate a person to receive help towards their fuel bills. It is a requirement of the Trust Deed that all the money received in a year is paid out in the same year. Traditionally, in the event of few applicants, the Trust invites persons over 70 years to apply to the fund for consideration.

We are now inviting applications for a distribution to take place in January. Please apply by Wednesday 5<sup>th</sup> November with name and address of applicant or nominated person to the clerk: Christine Minns, High Gables, Church Road, Wreningham ,NR16 1BH (Tel: 488123). If you need any further explanation or details do contact me by phone.

## Poppy Appeal

Ruby and Christine Hallis will not be doing a door to door poppy appeal this year. They wish to thank everybody for their support over the past 6 years.

Hopefully, with many stores and other public places having collection boxes along with street collections, anybody who wishes to support the appeal will still be able to do so.

**WHY NOT ADVERTISE YOUR LOCAL BUSINESS OR  
SERVICES HERE?**

(Just a £5 Donation for the year!)

Contact Jill Hustler on 481823

**DOMESTIC AL**

**Electrical Appliance Repair**

(From washing machines to Dyson vacuums)

01508 481919

**LOST CONTROL OF YOUR PLOT?**

Contact Trevor, your local Green Gardener

On 01508 489253 or Email [tdw2106@gmail.com](mailto:tdw2106@gmail.com)

**SARAH'S CAKES**

Celebration cakes with a homemade touch

07967 931754

[www.sarahscakesoffundenhall.co.uk](http://www.sarahscakesoffundenhall.co.uk)

**REEDER TIMBER**

Supplier: - Firewood, Tree Surgery, Fencing

01508 488452

**D.M.G**

*'Your local trusted builder'*

***Renovation to New build. General property  
maintenance.***

Call Darryl on 489690 or 07584492508

# October & November @ WrenSocial



**DON'T MISS OUT!**

## Family Games Night



Fri 3rd Oct

Bar Open: 6:30pm

Games Begin: 7pm

- Weasel & Veteran Elephant Racing
  - Play your Cards Right (Higher or Lower)
  - Safe Cracker (Guess the Code)
  - Six of a Kind Dice ● Roll-a-ball
- WIN FUN MONEY FOR PRIZE AUCTION

**2ND FRIDAY:**      **OCT 10**  
                                 **NOV 14**

## Fish & Chips Friday

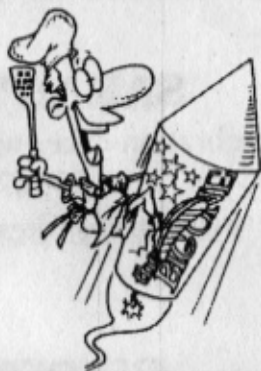
**Eat Here or Take Home**  
**CHIP VAN IN CAR PARK 6-7.30PM**

Fri 7th Nov FAMILY NIGHT From 6:30pm

FRI 17 OCT

## CURRY NIGHT

From 7pm  
**IT'S BACK!**  
Curries provided.  
They're delicious!!  
Just make a  
donation for  
your meal.

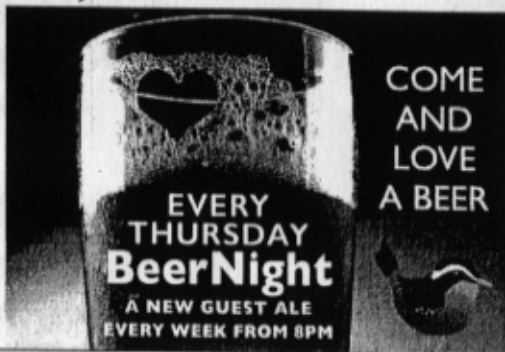


**SAT 8 NOV**  
WrenSocial  
**FIREWORKS**  
& Family BBQ  
from 7pm.

**LAST FRIDAY:**      **OCT 31**  
Bar open from 8pm      **NOV 28**

## LADIES NIGHT

SPECIAL COCKTAIL EVENINGS



FOLLOW THE WREN FOR UPDATES: WEB: [WrenSocial.com](http://WrenSocial.com)  
TWITTER: @WrenSocial      FACEBOOK: [facebook.com/WrenSocial](http://facebook.com/WrenSocial)